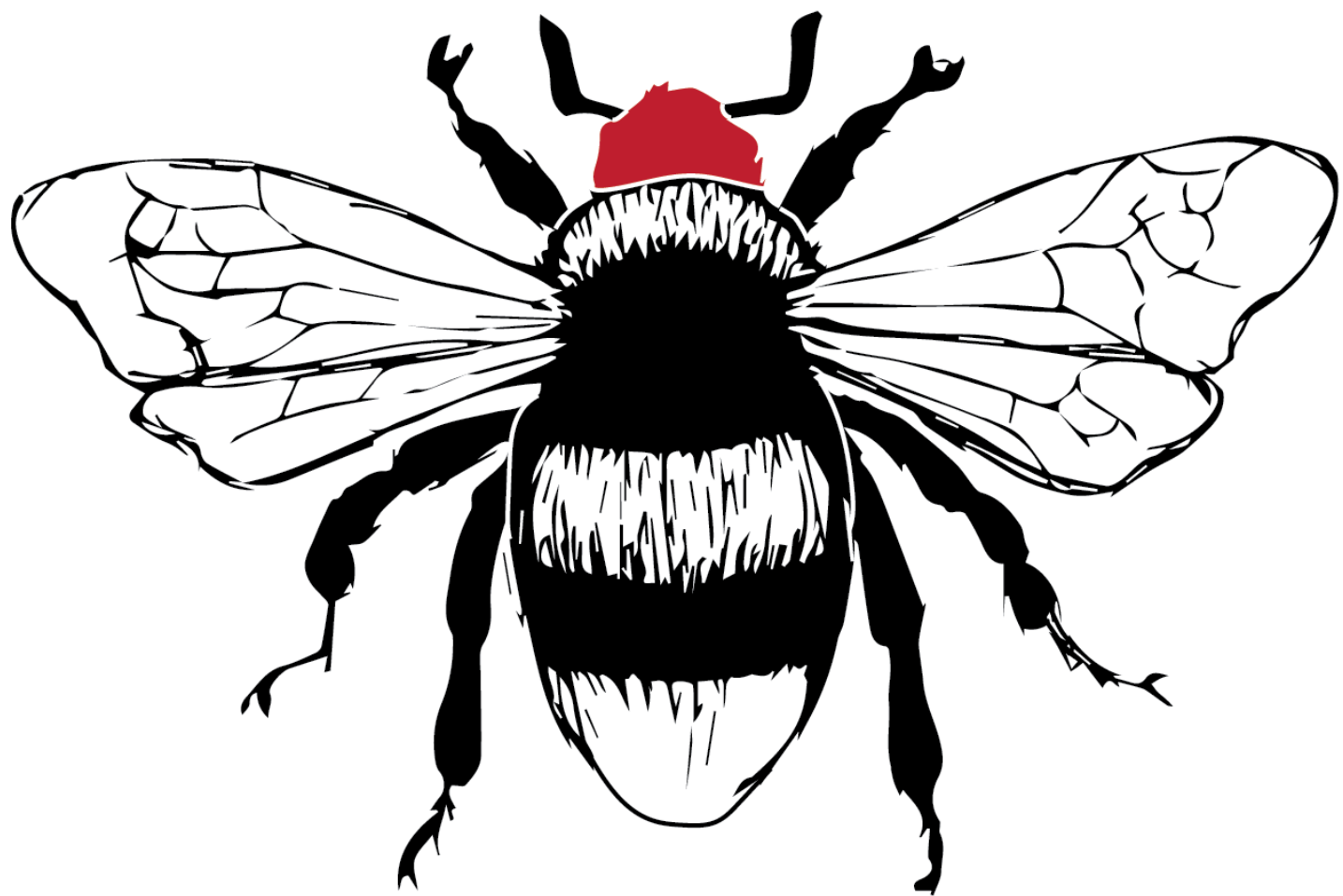


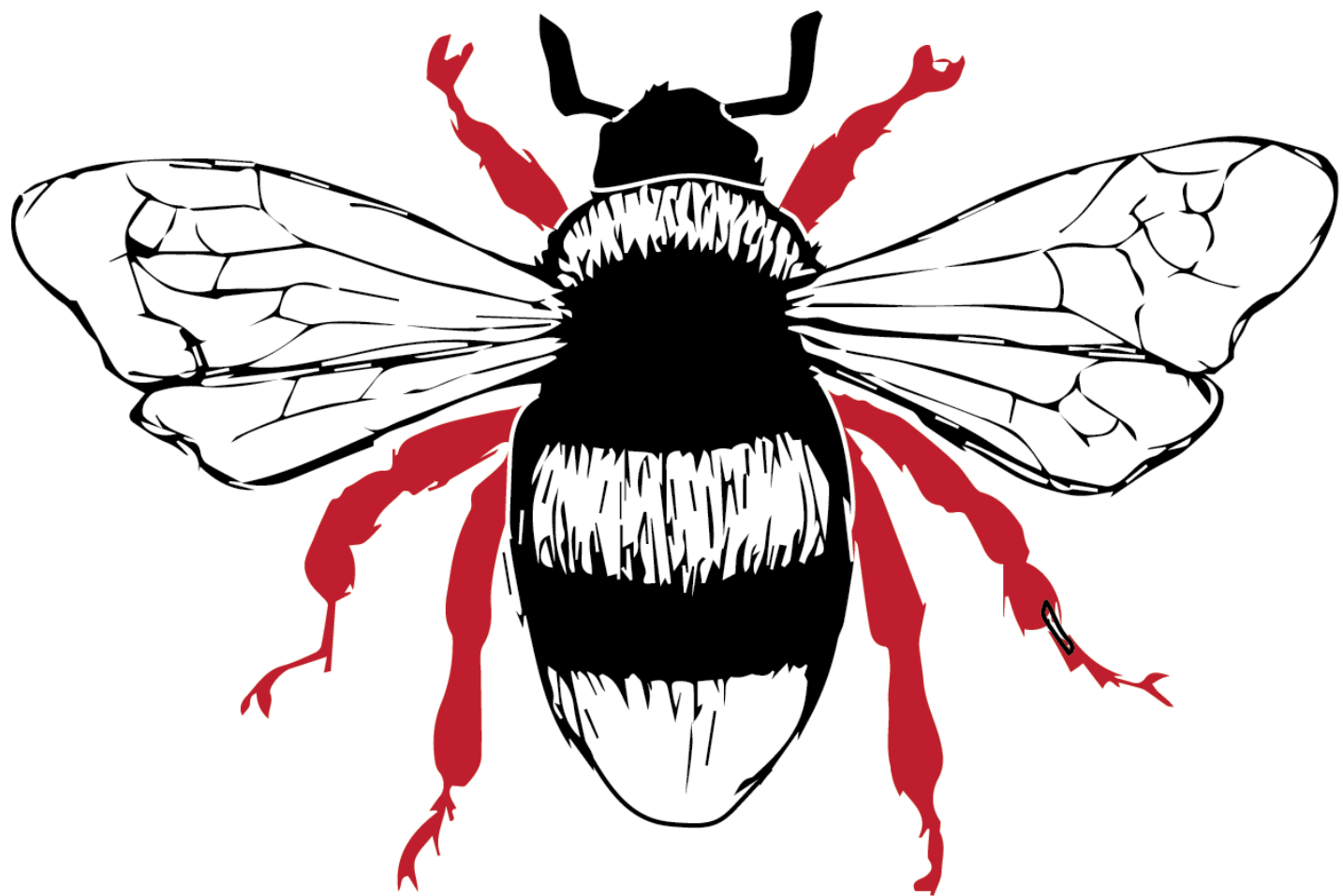
insect





head





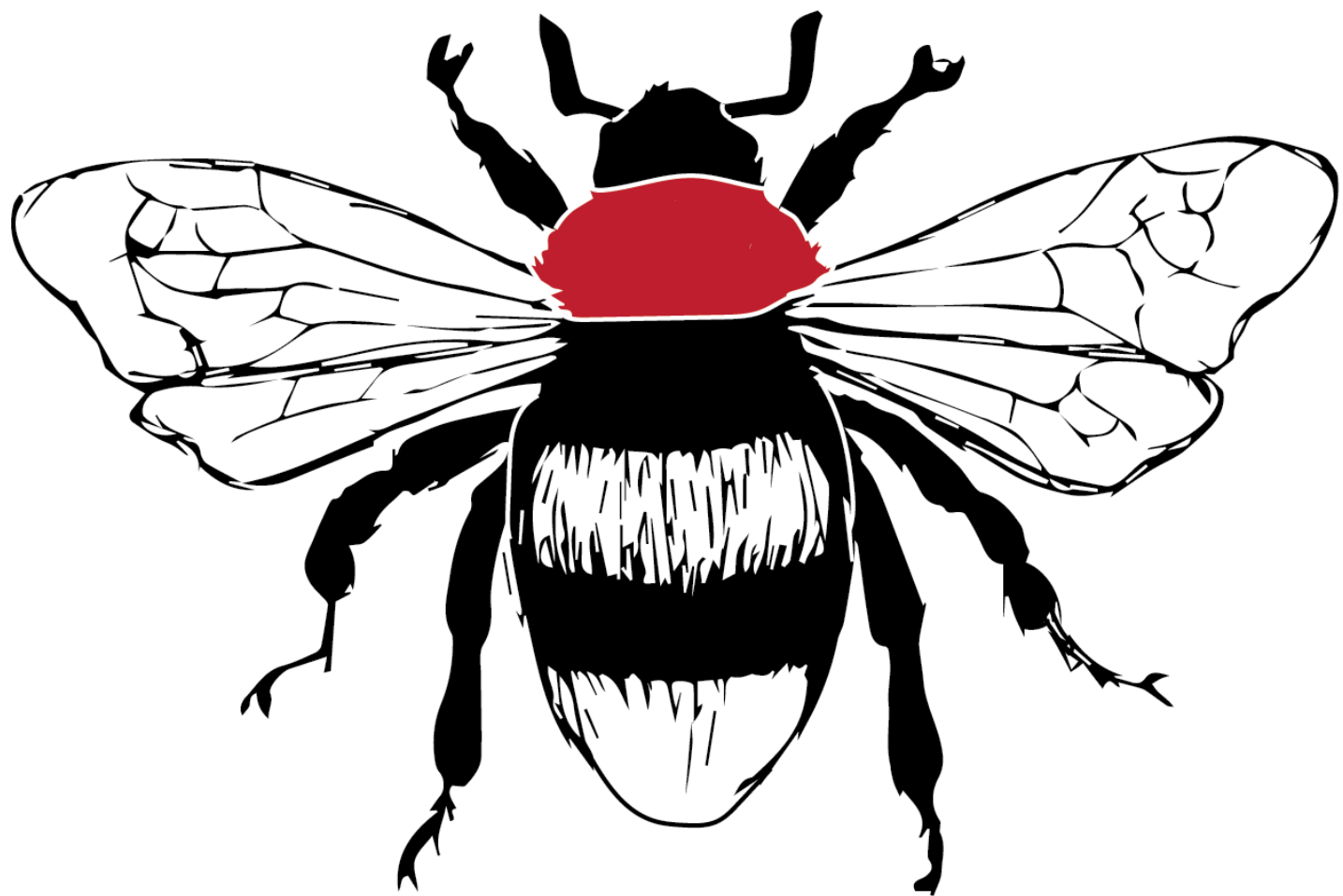
legs





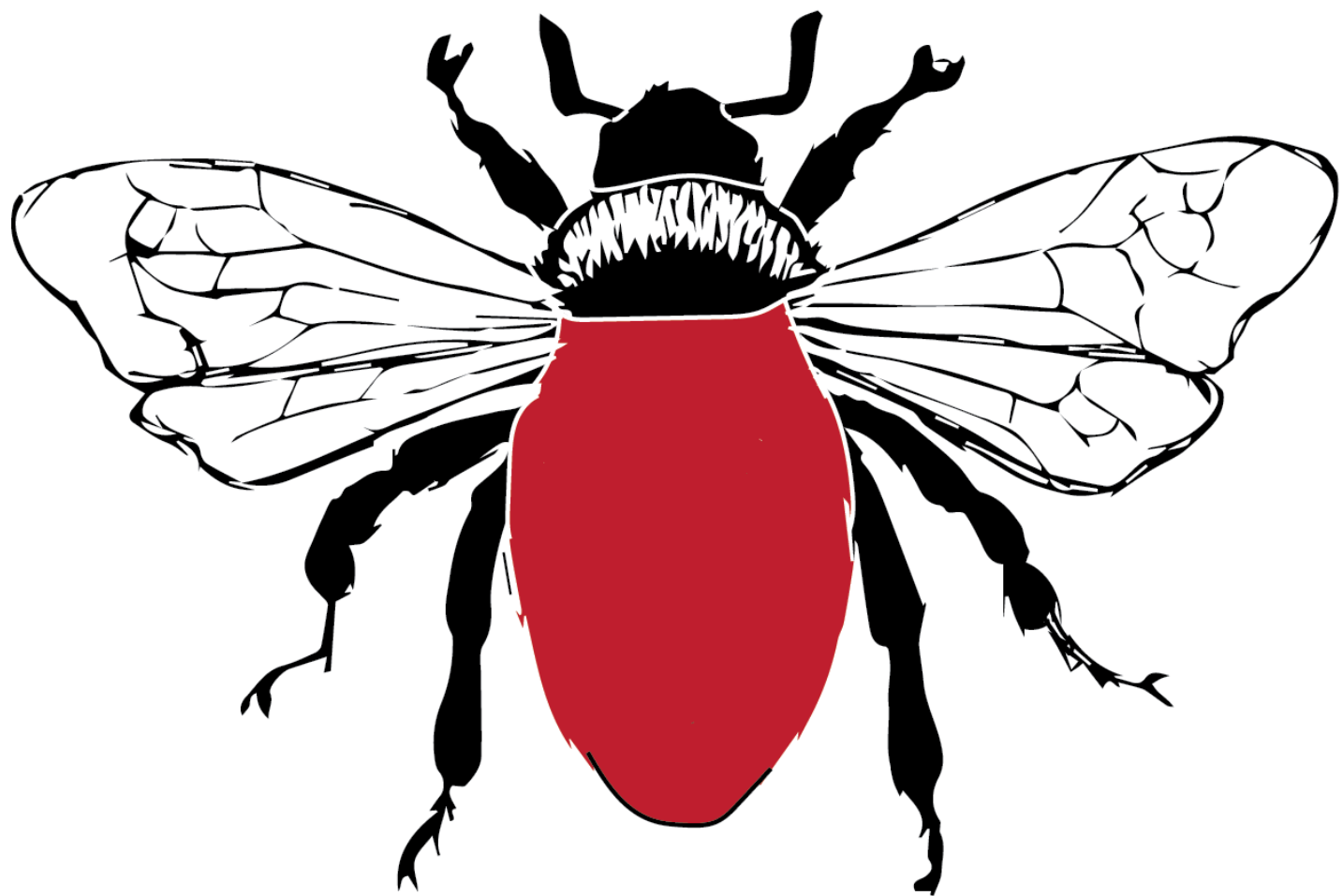
wings





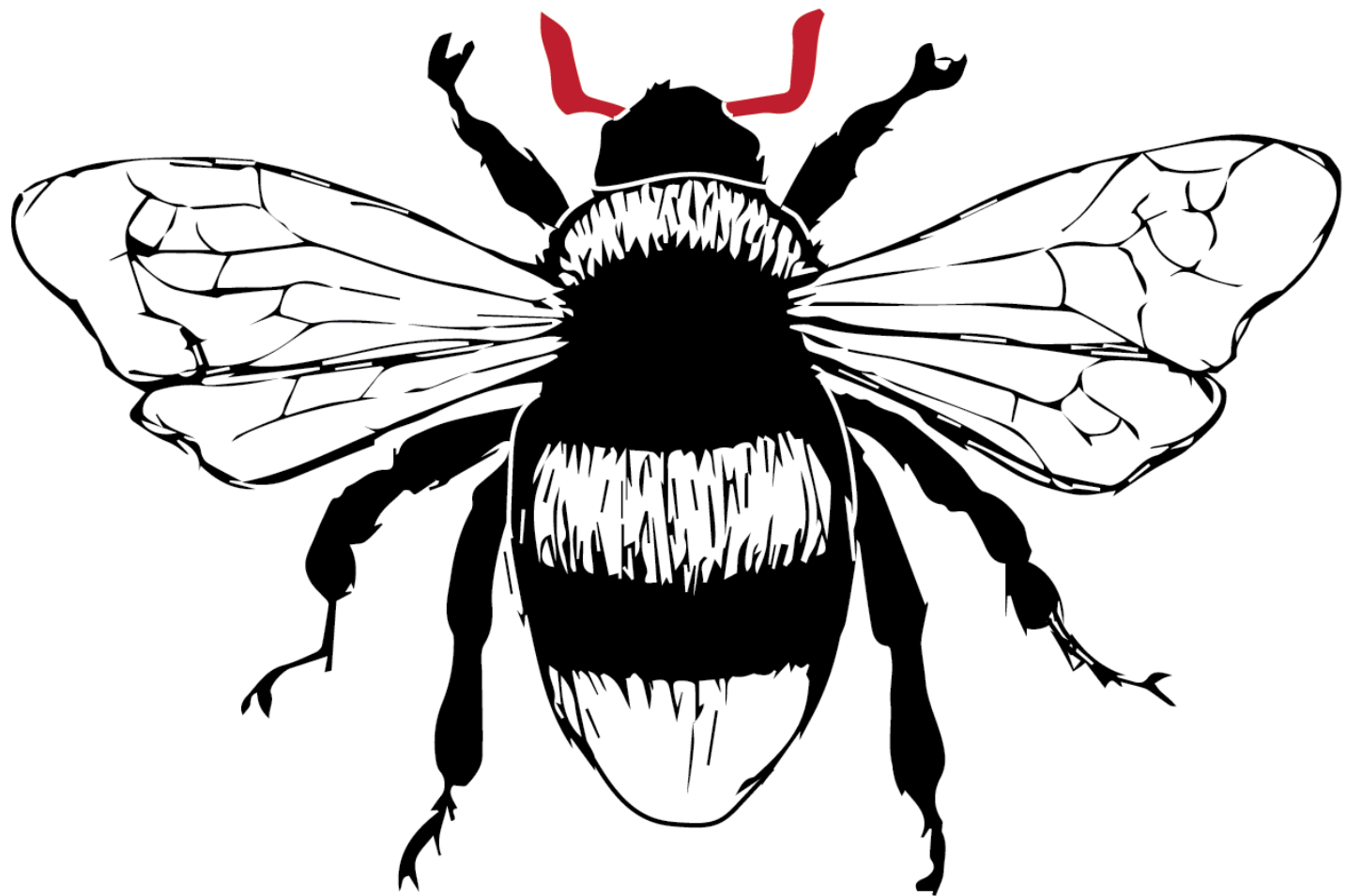
thorax





abdomen





antennae



The **antennae** are used to detect odors or to touch objects.





The **abdomen** is the end section of an adult insect.



The **thorax** is the middle section of an adult insect.



The **head** is the front section of an adult insect.



An **insect** is an animal that does not have a backbone. Its body is divided into three sections. It has three pairs of legs and generally has one or two pairs of wings.



The **wings** are membranes which allow the insect to fly.



The **legs** of an adult insect  
number six.

